



Corn Hybrids Catalog

2024/2025

INOVA[®]
GENÉTICA

The Inova Genética Ltda is the youngest and most promising company for soybean and corn genetic breeding and seed production in Brazil.

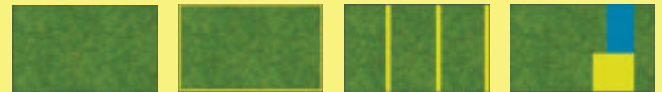
This is the third generation of Wehrmann Group companies in this branch of business. The Inova Genética Ltda have three research centers, located in Cristalina, Goiás; Lucas do Rio Verde, Mato Grosso and Porto Nacional, Tocantins. In addition to the phytopathology and molecular biology laboratories located in Cristalina, we conduct research in more than 100 locations, distributed across the main soybean-producing states in Brazil. With a highly qualified technical team, with Ph.D and M.S in different plant breeding fields, in addition to the experience of three generations in this activity, the Inova Genética Ltda stands out for its efficiency and speed in developing new soybean cultivars and corn hybrids for the Brazilian market.

In this folder, the company shows the most recent corn hybrids launches for 2024/2025 crop season.



How to take refuge?

- The minimum proportion is 10% of the total planted area with refuge (Ex.: in 100 ha, 90 ha with Bt-Corn and 10 ha without Bt-Corn);
- The distance between Bt-Corn and non Bt-Corn must be a maximum of 800m;
- The corn hybrids used as refuge must have a vegetative cycle similar to Bt-Corn and be planted as close as possible and at the same time as the Bt-Corn;
- Refuge insecticide applications must follow Integrated Pest Management (IPM) guidelines;
- The refuge configuration can be block, perimeter, strips or together with different crops, as long as it complies 800m as the maximum distance.



VA 16DM PRO4

CYCLE AS A PLANNING
DIFFERENTIAL AND PRO4 AS
MAXIMUM PROTECTION

inova
GENETICA

VTPRO4

Agronomic traits:



Hybrid type:
SIMPLE



Cycle:
SUPER PRECOCIOUS



Corn husk:
GOOD



Stalk quality:
GOOD



Grain type:
YELLOW SEMI-DENTATE



Use for:
GRAIN AND SILAGE

Management highlights:

- Super precocious flowering and high dry down;
- Stability with range of seasons for sowing;
- Low cob fitting and high-quality stalk.

Recommendations:

Population: plants at harvest - ha

Time for sowing	ALTITUDES ABOVE 700M		ALTITUDES BELLOW 700M	
	SOUTH	MIDWEST	SOUTH	MIDWEST
Season (Summer)	65000 - 70000	65000 - 70000	60000 - 65000	60000 - 65000
Off-season (until Feb 10th)	65000 - 70000	65000 - 70000	60000 - 65000	60000 - 65000
Off-season (Feb 11 - Feb 28)	60000 - 65000	60000 - 65000	55000 - 60000	55000 - 60000
Off-season (after Mar 1st)	55000 - 60000	55000 - 60000	50000 - 55000	55000 - 60000

Recommendation On request

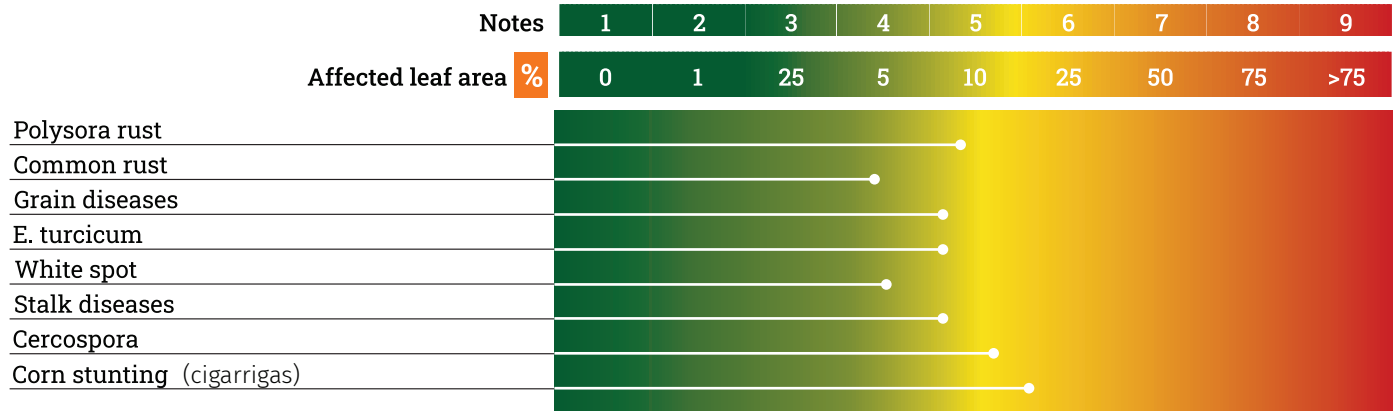
Transgenic

Pest Control

- Use refuge area with non-transgenic hybrids;
- Use insecticide in desiccation to control adult caterpillars;
- Integrated Pest Management (IPM);
- Industrial Seed Treatment (IST).

Weed Control

- No restrictions for Tembotrione and/or Atrazine use;
- Recommendation for the use of Mesotrione and Nicosulfuron. In normal doses, no restriction for Atrazine mixing;
- Regard the 7-day interval when using nitrogen fertilizers and organophosphate insecticides;
- Glyphosate-resistant hybrid, with no restrictions on pre- or post-emergence use. For post-emergence, it must be carried out until V5 according to manufacturer's instructions for products with this active ingredient.



VA 22DM PRO4

HIGH YIELDING AND PRO4
AS MAXIMUM PROTECTION



Agronomic traits:



Hybrid type:
SIMPLE



Cycle:
PRECOCIOUS



Corn husk:
·VERY GOOD



Stalk quality:
GOOD



Grain type:
**YELLOW-ORANGE
SEMI-DENTATE**



Use for:
GRAIN AND SILAGE

Management highlights:

- High yielding potential;
- Fast dry down
- Deep grains with excellent health and threshing.

Recommendations:

Population: plants at harvest - ha

Time for sowing	ALTITUDES ABOVE 700M		ALTITUDES BELLOW 700M	
	SOUTH	MIDWEST	SOUTH	MIDWEST
Season (Summer)	65000 - 70000	65000 - 70000	60000 - 65000	60000 - 65000
Off-season (until Feb 10th)	65000 - 70000	60000 - 65000	60000 - 65000	60000 - 65000
Off-season (Feb 11 - Feb 28)	60000 - 65000	60000 - 65000	55000 - 60000	55000 - 60000
Off-season (after Mar 1st)	55000 - 60000	55000 - 60000	50000 - 55000	55000 - 60000

Recommendation On request

Transgenic



Pest Control

- Use refuge area with non-transgenic hybrids;
- Use insecticide in desiccation to control adult caterpillars;
- Integrated Pest Management (IPM);
- Industrial Seed Treatment (IST).



Weed Control

- No restrictions for Tembotrione and/or Atrazine use;
- Recommendation for the use of Mesotrione and Nicosulfuron. In normal doses, no restriction for Atrazine mixing;
- Regard the 7-day interval when using nitrogen fertilizers and organophosphate insecticides;
- Glyphosate-resistant hybrid, with no restrictions on pre- or post-emergence use. For post-emergence, it must be carried out until V5 according to manufacturer's instructions for products with this active ingredient.

	Notes	1	2	3	4	5	6	7	8	9
Affected leaf area	%	0	1	25	5	10	25	50	75	>75
Polysora rust		[Progress bar from 0% to 3%]								
Common rust		[Progress bar from 0% to 5%]								
Grain diseases		[Progress bar from 0% to 10%]								
E. turcicum		[Progress bar from 0% to 25%]								
White spot		[Progress bar from 0% to 50%]								
Stalk diseases		[Progress bar from 0% to 75%]								
Cercospora		[Progress bar from 0% to 85%]								
Corn stunting (cigarrigas)		[Progress bar from 0% to 95%]								

VA 19A VIP3



Agronomic traits:

Agrisure Viptera 3



Hybrid type:
SIMPLE



Cycle:
PRECOCIOUS



Corn husk:
GOOD



Stalk quality:
VERY GOOD



Grain type:
**YELLOW-ORANGE
SEMI-HARD**



Use for:
**GRAIN AND
SILAGE**

Management highlights:

- Disease resistance and stalk health;
- Aggressive adventitious root;
- Leaf and grain health.

Recommendations:

Population: plants at harvest - ha

Time for sowing	ALTITUDES ABOVE 700M		ALTITUDES BELLOW 700M	
	SOUTH	MIDWEST	SOUTH	MIDWEST
Season (Summer)	65000 - 70000	65000 - 70000	60000 - 65000	60000 - 65000
Off-season (until Feb 10th)	65000 - 70000	65000 - 70000	60000 - 65000	60000 - 65000
Off-season (Feb 11 - Feb 28)	60000 - 65000	60000 - 65000	55000 - 60000	55000 - 60000
Off-season (after Mar 1st)	55000 - 60000	55000 - 60000	50000 - 55000	55000 - 60000

Recommendation On request

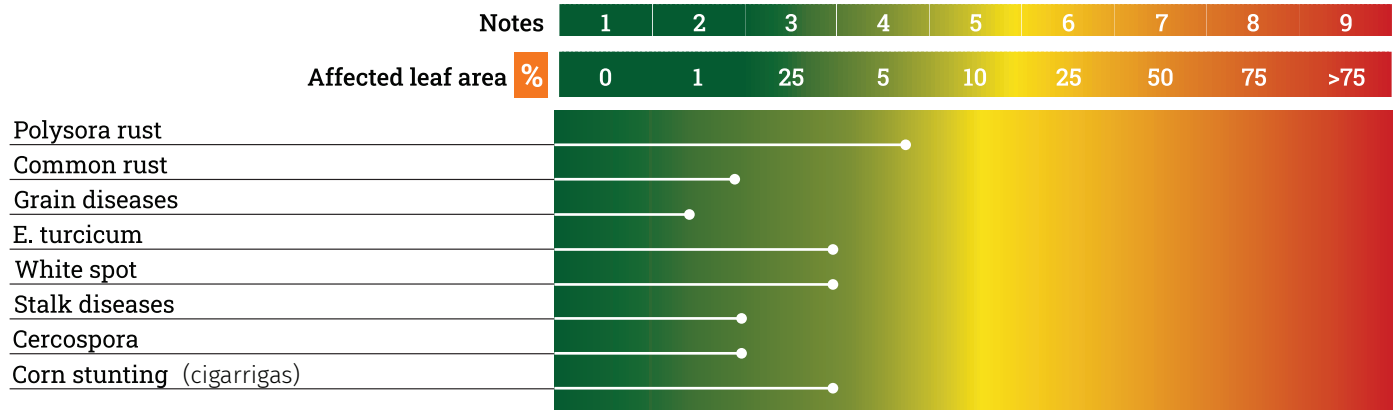
Transgenic

Pest Control

- Use refuge area with non-transgenic hybrids (minimum of 10% of total area);
- Use insecticide in desiccation to control adult caterpillars;
- Integrated Pest Management (IPM);
- Use insecticide to control sucking insects like bedbugs, leafhoppers and others;
- Industrial Seed Treatment (IST).

Weed Control

- No restrictions for Tembotrione, Mesotrione and Nicosulfuron;
- Hybrid resistant to glyphosate and glufosinate, without restrictions for pre- and post-emergence use.



VA 42B



Agronomic traits:



Hybrid type:
SIMPLE



Cycle:
PRECOCIOUS



Corn husk:
VERY GOOD



Stalk quality:
GOOD



Grain type:
**YELLOW-ORANGE
SEMI-HARD**



Use for:
**GRAIN AND
SILAGE**

Management highlights:

- High tolerance to stunting complex;
- Range of sowing environments and management practices;
- Stalk and grain health.

Recommendations:

Population: plants at harvest - ha

Time for sowing	ALTITUDES ABOVE 700M		ALTITUDES BELLOW 700M	
	SOUTH	MIDWEST	SOUTH	MIDWEST
Season (Summer)	65000 - 70000	65000 - 70000	60000 - 65000	60000 - 65000
Off-season (until Feb 10th)	65000 - 70000	62000 - 67000	60000 - 65000	60000 - 65000
Off-season (Feb 11 - Feb 28)	60000 - 65000	60000 - 65000	55000 - 60000	55000 - 60000
Off-season (after Mar 1st)	55000 - 60000	55000 - 60000	50000 - 55000	50000 - 55000

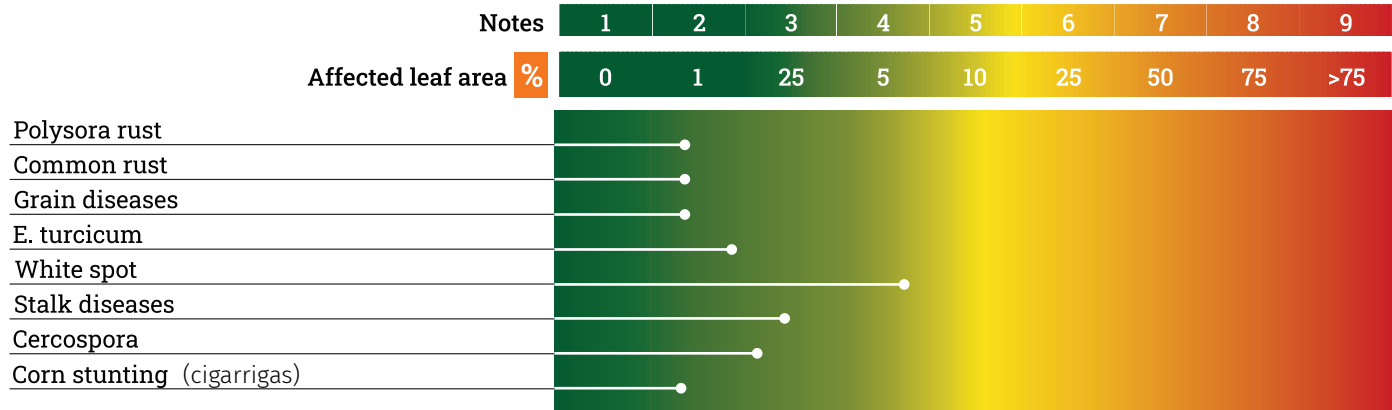
Recommendation On request

Pest Control

- Use insecticide in desiccation;
- Integrated Pest Management (IPM);
- Use insecticide to control sucking insects like bedbugs, leafhoppers and others;
- Industrial Seed Treatment (IST).

Weed Control

- No restrictions for Tembotrione, Mesotrione and Nicosulfuron;
- The use of glyphosate and glufosinate restricted to desiccation or pre-emergence.



VA 25RY PRO2

TOLERÂNCIA A ENFEZAMENTO
& RÁPIDA PERDA DE UMIDADE.

inova
GENÉTICA

VT PRO 2⁺

Agronomic traits:



Hybrid type:
SIMPLE



Cycle:
PRECOCIOSO



Corn husk:
GOOD



Stalk quality:
GOOD



Grain type:
**YELLOW-ORANGE
SEMI-DENTATE**



Use for:
**GRAIN AND
SILAGE**

Management highlights:

- High tolerance to stunting complex;
- Range of sowing environments and management practices;
- Stalk and grain health.

Recommendations:

Population: plants at harvest - ha

Time for sowing	ALTITUDES ABOVE 700M		ALTITUDES BELLOW 700M	
	SOUTH	MIDWEST	SOUTH	MIDWEST
Season (Summer)	65000 - 70000	65000 - 70000	60000 - 65000	60000 - 65000
Off-season (until Feb 10th)	65000 - 70000	62000 - 67000	60000 - 65000	60000 - 65000
Off-season (Feb 11 - Feb 28)	60000 - 65000	60000 - 65000	55000 - 60000	55000 - 60000
Off-season (after Mar 1st)	55000 - 60000	55000 - 60000	50000 - 55000	50000 - 55000

Recommendation On request

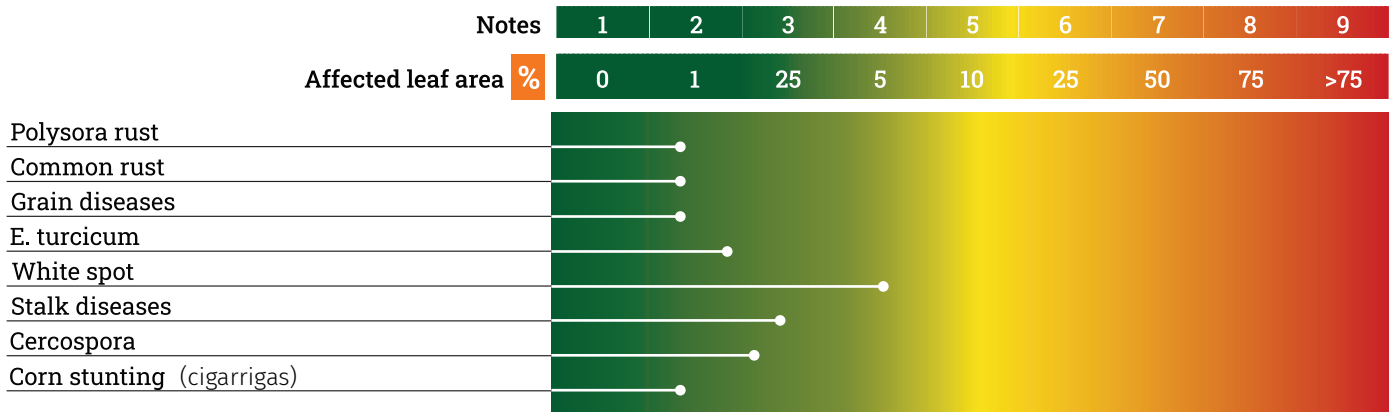
Transgenic

Pest Control

- Use refuge area with non-transgenic hybrids;
- Use insecticide in desiccation to control adult caterpillars;
- Integrated Pest Management (IPM);
- Use insecticide to control sucking insects like bedbugs, leafhoppers and others.;
- Industrial Seed Treatment (IST).

Weed Control

- No restrictions for Tembotrione, Mesotrione and Nicosulfuron;
- Hybrid resistant to glyphosate and glufosinate, without restrictions for pre- and post-emergence use.





www.inovagenetica.com.br

 (61) 3204-5100 Ramal 4

 @inovagenetica_

 Inova Genética LTDA

 Rodovia BR 251 - Campos Lindos - Cristalina/GO - CEP 73.850-000